

DEKS

A Skellerup Industries Company



Connective Systems & Supply



Dektite[®] Original

The original watertight flashing for metal roof penetrations



FS 520679
IN QUALITY ISO 9001



- Easy to identify**
Dektite brand name engraved on product for traceability
- Unique cone design**
Provides 10mm (1/2") continuous contact with flashed pipe providing a watertight seal
- Clear markings in metric and imperial measures**
Makes for easier cutting to pipe size
- Proven design**
Associated with the roofing industry globally for over 40 years
- Size ranges - Numbers 0-9**
Available in Black and Grey EPDM, and red silicone
- Twenty year warranty**
Just fit it and forget it - we've got you covered



If We Don't Have It, You Don't Need It!
Serving all of Colorado and beyond!

Loveland: 800-638-9264
Denver: 970-310-7385



A Skellerup Industries Company

Selection Guide

DEKS Code			Description	Pipe OD		Base OD		Pitch	Carton QTY
Black EPDM	Grey EPDM	Red Silicone		mm	inch	mm	inch		
DF100B	DF100G	DF200RE	Dektite Original #0	0 - 35	0 - 1 3/8"	93	3 3/4"	0-40° or 10/12	40
DF101B	DF101G	DF201RE	Dektite Original #1	5 - 60	1/4 - 2 1/2"	124	4 3/4"	0-40° or 10/12	10
DF102B	DF102G	DF202RE	Dektite Original #2	45 - 80	1 3/4 - 3 1/4"	162	6 1/2"	0-40° or 10/12	10
DF103B	DF103G	DF203RE	Dektite Original #3	5 - 127	1/4 - 5"	202	8"	0-40° or 10/12	10
DF104B	DF104G	DF204RE	Dektite Original #4	75 - 160	3 - 6 1/4"	238	9 1/2"	0-40° or 10/12	10
DF105B	DF105G	DF205RE	Dektite Original #5	108 - 190	4 1/4 - 7 1/2"	276	11"	0-40° or 10/12	5
DF106B	DF106G	DF206RE	Dektite Original #6	125 - 230	5 - 9"	322	12 3/4"	0-40° or 10/12	5
DF107B	DF107G	DF207RE	Dektite Original #7	150 - 280	6 - 11"	372	14 3/4"	0-40° or 10/12	5
DF108B	DF108G	DF208RE	Dektite Original #8	175 - 330	7 - 13"	422	16 3/4"	0-40° or 10/12	5
DF109B	DF109G	DF209RE	Dektite Original #9	254 - 483	10 - 19"	647	25 1/2"	0-40° or 10/12	1

Available in Black and Grey EPDM or Red Silicone

EPDM will withstand constant temperatures at the roofline of -50°C (-58°F) to 115°C (239°F) and up to 150°C (302°F) intermittently
 Red Silicone will withstand constant temperatures at the roofline of -50°C (-58°F) to 200°C (392°F) and up to 250°C (482°F) intermittently

Please Note That the outside temperature of the pipe may be significantly different to the exit temperature of the appliance.

Installation Information



1 Cut Dektite™ at appropriate pipe diameter marking.



2 Slide Dektite™ flashing down over pipe.



3 Apply sealant on underside of flexible aluminum base.



4 Press Dektite™ base into contours of panel configuration.



5 Fasten Dektite™ to surface with long-life, self-drilling fasteners. Apply additional sealant around base if desired.



DEKTITE RETROFIT GREY EPDM

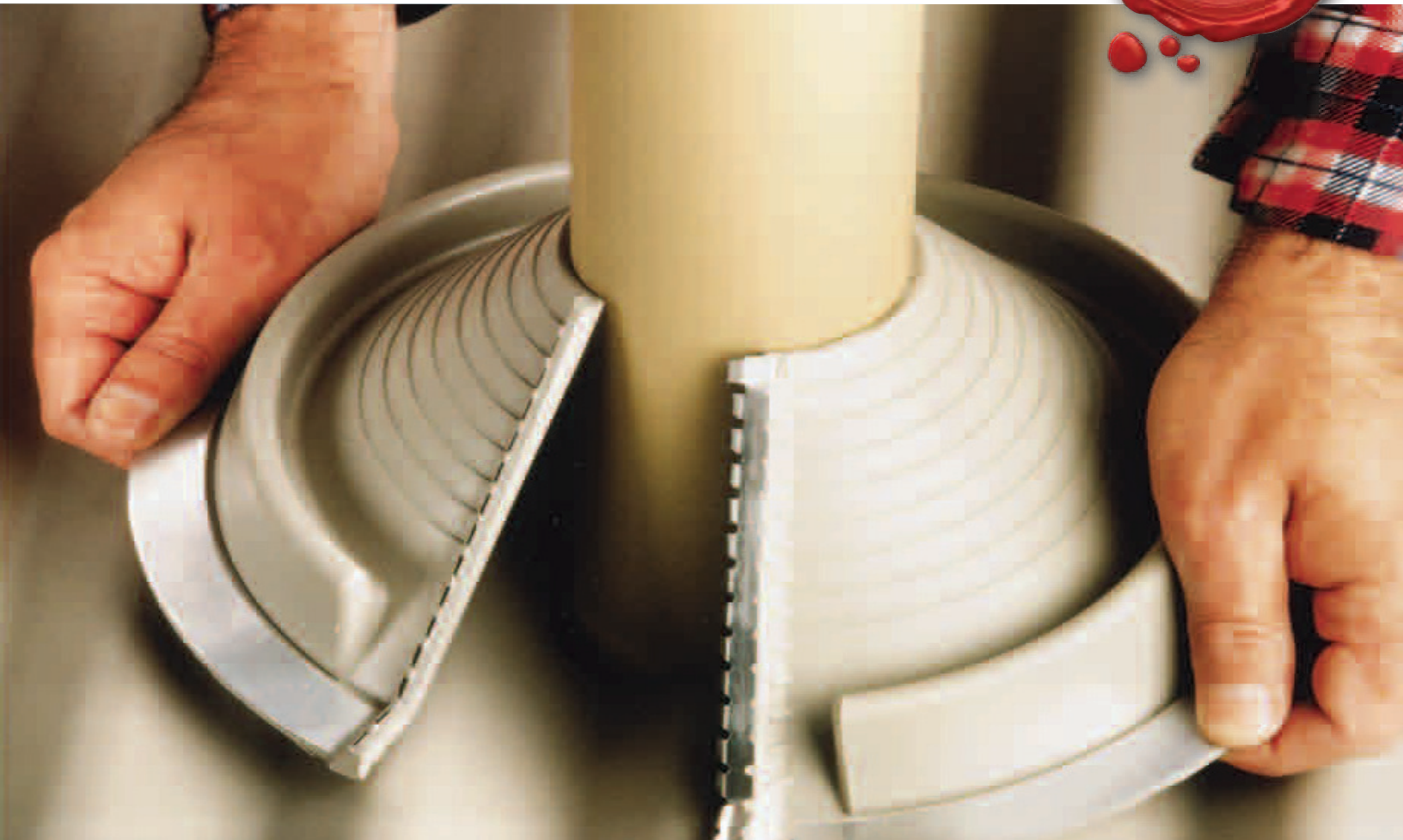


DEKTITE ORIGINAL RED SILICONE



If We Don't Have It, You Don't Need It!
 Serving all of Colorado and beyond!

Loveland: 800-638-9264
Denver: 970-310-7385



Retrofit[®] Original

When it has to flash
around, not over



- Fast and Efficient installation
Wraps around existing or difficult to access pipes
- Snaps together in seconds
The built-in crimp means no loose clips or rivets
- Grips tight and stays tight
Made from DEKS quality polymer compound
- Our base makes easy work
Aluminium base conforms to roof with ease
- Twenty year warranty
Just fit it and forget it - we've got you covered



If We Don't Have It, You Don't Need It!
Serving all of Colorado and beyond!

Loveland: 800-638-9264
Denver: 970-310-7385



Selection Guide

DEKS Code			Description	Pipe OD		Base		Pitch	Carton QTY
Black EPDM	Grey EPDM	Red Silicone		mm	inch	mm	inch		
RF801B	RF801G	RF801RE	Dektite Retrofit #1	20-70	1/4" - 2 1/4"	160	2 1/4" x 2 1/4"	0 - 40° or 1 1/2	10
RF802B	RF802G	RF902RE	Dektite Retrofit #2	50 - 190	2" - 7 1/2"	273	4" x 4"	0 - 40° or 1 1/2	5
RF803B	RF803G	RF903RE	Dektite Retrofit #3	85 - 255	3 1/4" - 10"	369	4" x 4"	0 - 40° or 1 1/2	5
	RFS4	RFS24	Dektite Soaker	235 - 425	9 1/4" - 16 1/4"	762 x 680	5 1/2" x 5 1/2"	0 - 40° or 1 1/2	2

Available in Black and Grey EPDM or Red Silicone

EPDM will withstand constant temperatures at the roofline of -50°C (-58°F) to 115°C (239°F) and up to 150°C (302°F) intermittently

Red Silicone will withstand constant temperatures at the roofline of -50°C (-58°F) to 200°C (392°F) and up to 250°C (482°F) intermittently

