

CSS

**WHERE THE
PROS GO**

Connective Systems & Supply

GARVIN[®]

 A Southwire Business

G GRIPPLE[®]

FLASHFASTENERS

**PROPRIETARY ELECTRICAL
PRODUCTS 2020**

NORTHERN COLORADO

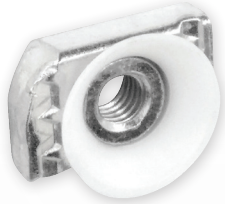
5718 Wright Drive
Loveland, CO 80538
Phone: 970.663.0304

DENVER

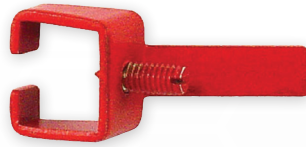
4905 Nome Street
Denver, CO 80239
Phone: 720.923.5023

GARVIN®

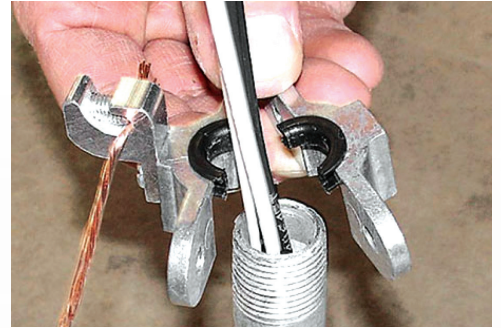
A Southwire Business



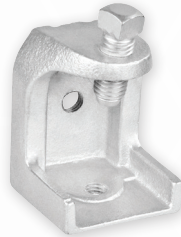
SNCN3816
3/8" CONE STRUT NUT



UBL1-RED
UNIVERSAL BREAKER
LOCK | RED



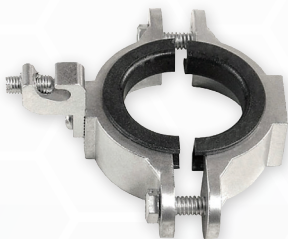
MBC-1213WM
1/2" -13 MALLEABLE
BEAM CLAMP | WM JAW



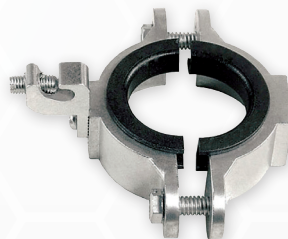
MBC-3816WM
3/8" -16 MALLEABLE
BEAM CLAMP | WM JAW



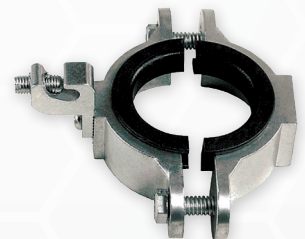
MBC-1420WM
1/4" -20 MALLEABLE
BEAM CLAMP | WM JAW



SGB100
1" SPLIT GROUND BUSHING



SGB200
2" SPLIT GROUND BUSHING



SGB400
4" SPLIT GROUND BUSHING

**BELLEVILLE WASHERS
AVAILABLE IN ANY
CONFIGURATION**



G GRIPPLE®



UniGrip - Standard

- Supplied with retention clip for pre-fabrication applications
- Designed for non-mechanical fixing through brackets
- Central cable exit



UniGrip - QT

- Designed for use with Gripple Universal Brackets
- Fast, simple quarter turn installation, no mechanical fix required
- Features safety clip for ultimate security
- Central cable exit



UniGrip - Central Exit

- 1" male thread for mechanical fixing
- Supplied with either a square washer and channel nut or hex nut
- Thread sizes - 3/8" (UniGrip #2), 3/8" (UniGrip #3) and 1/2" (UniGrip #4)
- Central cable exit
- Ideal for use with Clevis Hanger



UniGrip - Side Exit

- Designed for applications in which cable cannot exit centrally (avoiding clashes with services)
- Supplied with a hex nut
- Side cable exit
- Thread sizes - 3/8" (UniGrip #2), 3/8" (UniGrip #3)
- Ideal for use with Clevis Hanger



UniGrip - Calibra

- Allows for adjustment of building services under load
- 1.37" of adjustment using integral pillar and M8 thread
- Side cable exit



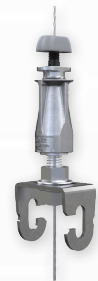
UniGrip - Hook

- Self closing latch for security
- Ideal for fast attachment to heating/cooling panels and light fittings
- Side cable exit



UniGrip - Y-Fit

- Dual fixing points for balance
- 6 in, 12 in and 18 in leg lengths as standard
- Grub screw can be adjusted with a 5/32" or 4mm hex key in order to adjust the legs
- Legs available with a variety of cable end fixings eg. Toggle, Snap Hook etc.
- Side cable exit



UniGrip - Cable Basket Adapter

- Designed for fast suspension of cable baskets up to 1/4" (6mm)
- Eliminates requirement for channel bearers
- Central cable exit

Cast-In-Place Solutions



TP SERIES
TRI-POD



TPR SERIES
TRI-POD w/Ring



TPR2 SERIES
TRI-POD w/2 Rings



TPR3 SERIES
TRI-POD w/3 Rings



RD SERIES
Red Dot Support



CRC SERIES
CRC Support



RCB SERIES
Dual Rack Support



R SERIES
Support Rack



RB SERIES
Rebar Support



RR SERIES
Ring Rack Support

Cast-In-Place Solutions



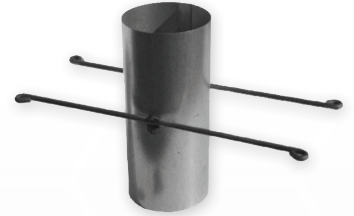
B SERIES
Box Support



DSR SERIES
Deck Sleeve Row



WDS SERIES
Cast-In-Place
Deck Sleeve



MDS SERIES
Metal Deck
Sleeve



BOW SERIES
Box out



Wall Box Series
Wall Box Support



RBHD SERIES
Rebar Stakes



RBHD2 SERIES
Rebar Stakes



RBRS SERIES
Rebar Stakes



TR SERIES
Trench Rack

FLASHFASTENERS



**SMOOTH
ROD
FOR
CONCRETE**



FLASH FOUR

Item#	Length
FLASHFOUR24	24"
FLASHFOUR30	24"
FLASHFOUR36	36"
FLASHFOUR42	42"
FLASHFOUR48	48"
FLASHFOUR60	60"

CUSTOM LENGTHS UP TO 96"

CAST IN PLACE
INSTALLS PRIOR TO
CONCRETE POUR
LOW COST
HIGH LOAD VALUES
CADDY™ CLIPS
SNAP ON EASILY



**ALLTHREAD
ROD
FOR
CONCRETE**



FLASH FOUR HD 1/4-20

Item#	Length
FLASHFOUR02524	24"
FLASHFOUR02536	36"
FLASHFOUR02548	48"

CUSTOM LENGTHS UP TO 96"

FLASH FOUR HD 3/8-16

Item#	Length
FLASHFOUR03724	24"
FLASHFOUR03736	36"
FLASHFOUR03748	48"

CUSTOM LENGTHS UP TO 96"

FLASH FOUR HD 1/2-13

Item#	Length
FLASHFOUR05024	24"
FLASHFOUR05036	36"
FLASHFOUR05048	48"

CUSTOM LENGTHS UP TO 96"

FLASHFASTENERS



FLASHSTACK

FLASHSTACK FOR 1/2"OD MC CABLE

Item#	Length
FLASHSTACK05012	12"
FLASHSTACK05018	18"
FLASHSTACK05024	24"
FLASHSTACK05030	30"
FLASHSTACK05036	36"
FLASHSTACK05042	42"
FLASHSTACK05048	48"
FLASHSTACK05060	60"
FLASHSTACK05072	72"
FLASHSTACK050120	120"

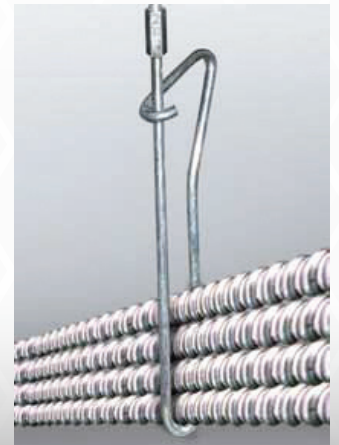
OTHER FASTENERS AVAILABLE

FLASHSTACK FOR 5/8"OD MC CABLE

Item#	Length
FLASHSTACK06212	12"
FLASHSTACK06218	18"
FLASHSTACK06224	24"
FLASHSTACK06230	30"
FLASHSTACK06236	36"
FLASHSTACK06242	42"
FLASHSTACK06248	48"
FLASHSTACK06260	60"
FLASHSTACK06272	72"
FLASHSTACK062120	120"

OTHER FASTENERS AVAILABLE

For stacking M/C Cables in a code compliant manner. FlashStack Can be used with any Flash Fastener, swivels 360 and snaps shut to secure the Cables.





If We Don't Have It, You Don't Need It!
 Serving all of Colorado and beyond!
 Loveland: 800-638-9264 Denver: 720-923-5023

Loveland Store



Address: 5718 Wright Dr., Loveland, CO 80538
Phone: 970-663-0304

Outside Sales Team:

Scooter Lovell — Owner

Cell: (970) 218-3278

Fax: (970) 663-2012

scooter@connective-systems.com

Lucas Lovell

& Gripple/Flash Expert

Cell: (970) 420-2113

Fax: (970) 663-2012

dan@connective-systems.com

Inside Sales Team:

Dan Tellez

Cell: (970) 663-0304

Fax: (970) 663-2012

dan@connective-systems.com

David Baca

Cell: (970) 663-0304

Fax: (970) 663-2012

David@connective-systems.com

Denver Store



Address: 4905 Nome Street, Denver, CO 80239
Phone: 720-923-5023

Outside Sales Team:

Aaron Berger — Owner

Cell: (970) 310-7385

Fax: 1-888-222-1097

aaron@connective-systems.com

Kenny Cochrane

Cell: (720) 576-2937

Fax: 1-888-222-1097

kenny@connective-systems.com

Brendan Kelly

Cell: (970) 278-7627

Fax: 1-888-222-1097

brendan@connective-systems.com

Nick Achziger

Cell: (720) 582-1959

Fax: 1-888-222-1097

nick@connective-systems.com

Drew Hawkins

Cell: (970) 617-4715

Fax: 1-888-222-1097

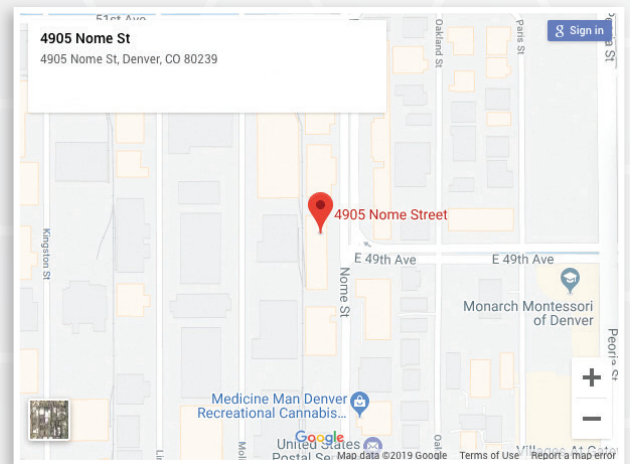
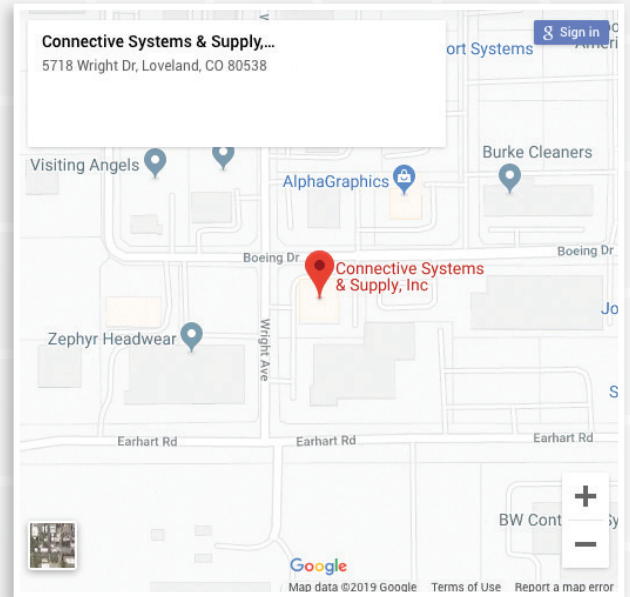
drew@connective-systems.com

Travis Orwig

Cell: (303) 483-1975

Fax: 1-888-222-1097

travis@connective-systems.com



Inside Sales Team:

Justin Davis

Cell: (720) 923-5023

justinD@connective-systems.com

Dustin Suszka

Cell: (720) 923-5023

dustin@connective-systems.com

Brycen Widgren

Cell: (720) 923-5023

brycen@connective-systems.com

Jeff Moore

Cell: (720) 923-5023

jeff@connective-systems.com